

## Troubleshooting

### ■When Error “77” occurs

Check the error number on the controller LED display.

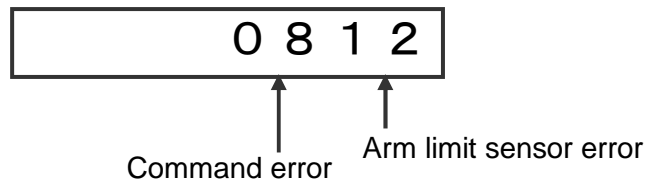
〈When error occurs〉

The last four errors are displayed in 2- digit hexadecimal number.

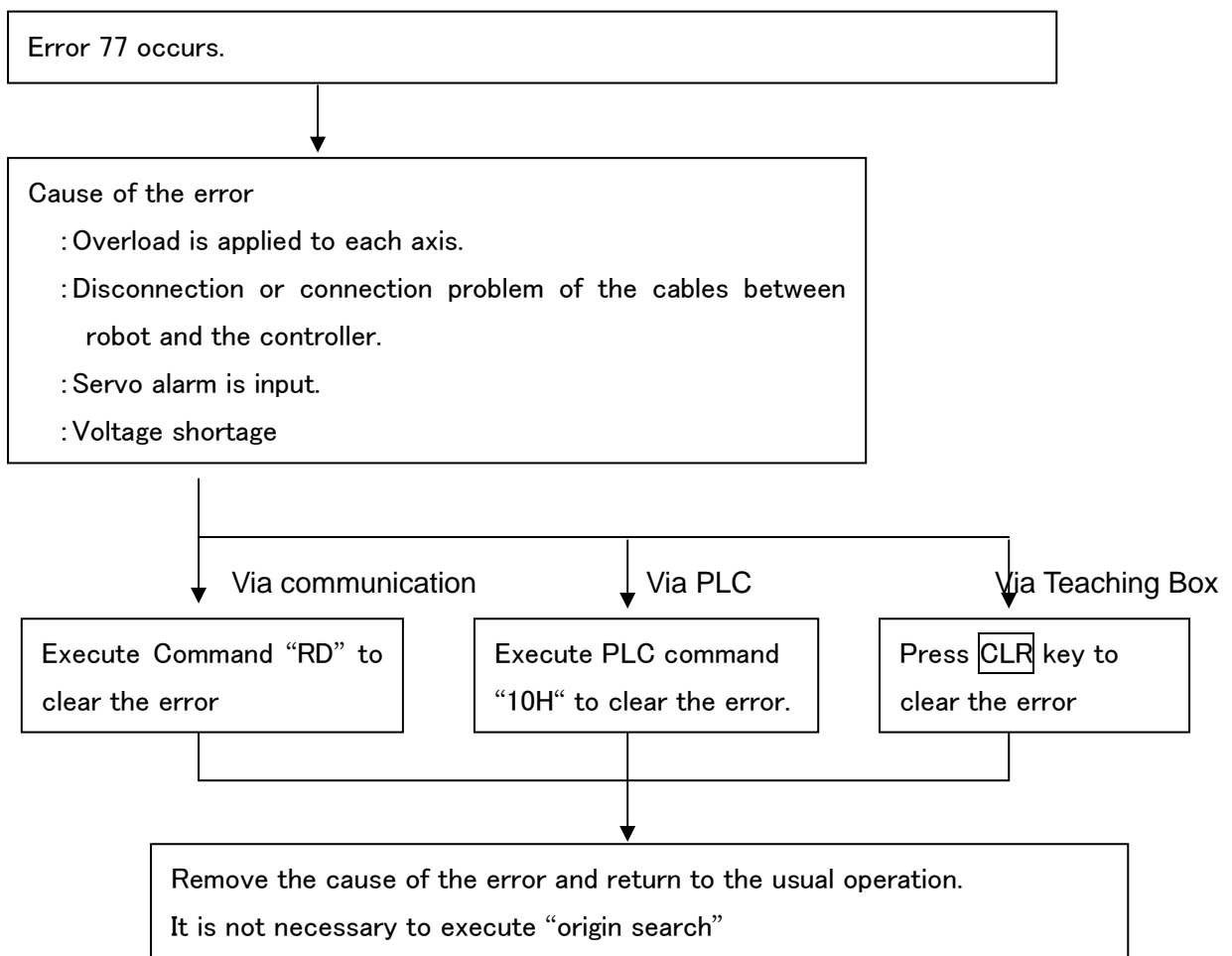
The latest error is shown on the leftmost side and the error history is shown in order.

Remove the cause of the error (Refer to the below tables) and return to the normal operation.

〈Example of display〉



### ●When error 77 (Servo alarm) occurs,



\*Note: Error 77 cannot be cleared depending on the robot specifications.  
In this case, turn the power OFF and recover.

●When the error occurs again

